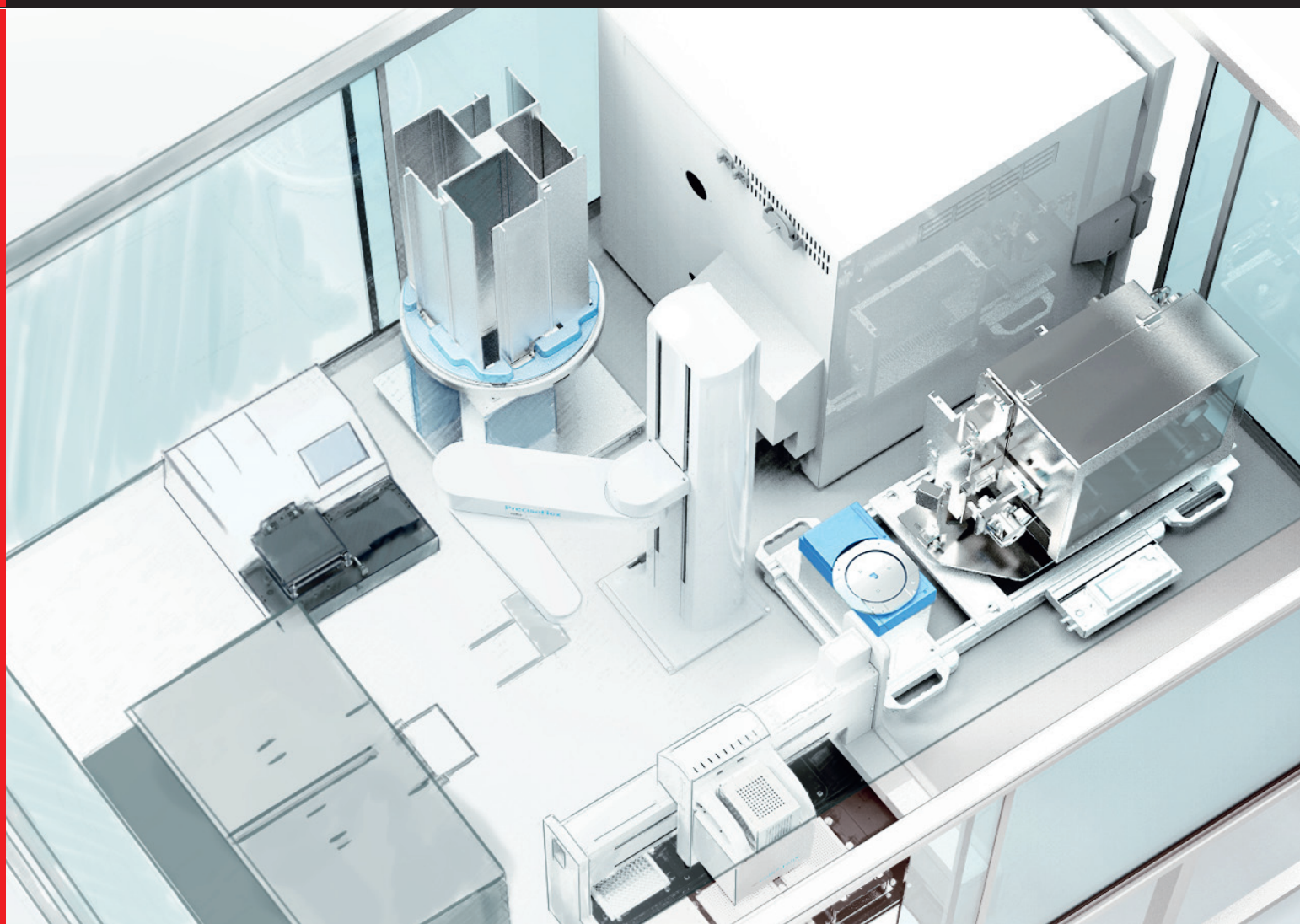


# Automation Solutions

## Customized Integration – Tailored to Your Needs

Lab Automation



# Automation Solutions

## Breadth of Integration Concepts

We are ready to listen to your needs. Depending on your application and degree of automation, we are happy to consult with you to choose the most appropriate format from a range of different integration concepts.



Fully Automated Systems

Benchtop Workstations

Small Scale Integrations



**Robotics**  
Whether you need a small-scale benchtop integration or a multi-assay system completely enclosed in an air-conditioned biosafety cabinet. Analytik Jena helps to maximize your productivity at every level.

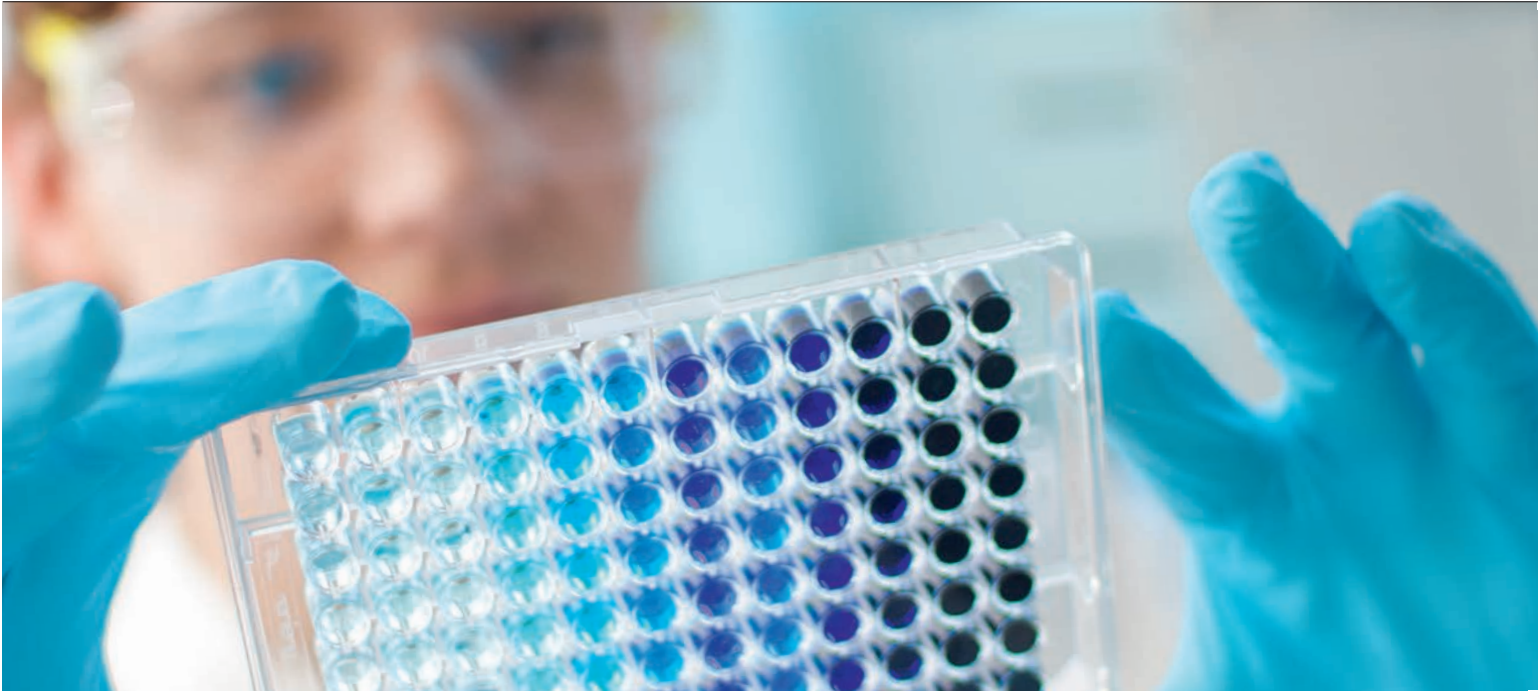
**Stäubli**  
▪ 6-axis robot arm

**PreciseFlex**  
▪ 4-axis robot arm with optional linear axis

**KiNEDx**  
▪ 4-axis robot arm

## Automation Solutions

Tailored to Your Needs



## Take Advantage of more than 25 Years Experience in Lab Automation

No matter if your research is still mainly manual or you are an experienced automation user, our solutions can help to increase your pace of discovery.

Analytik Jena is a global life sciences enterprise with its headquarters in Jena, Germany, and offices around the world. Being the inventor of multi-channel pipettors, we are known for our excellent liquid handling instruments.

Our Automation group combines this expertise with personalized service, powerful software and proven third party products to create fully integrated systems.

Our goal is to help you meet the increasing demands of your research with high quality, high-throughput solutions that boost productivity and enable true walk-away automation.

In the pharmaceutical and life science industries, our products enjoy the highest reputation for precision, reliability and simplicity. We seek to maintain and further develop a close relationship with our clients, as we perceive this dialogue as an excellent opportunity to continuously improve the quality of our products and services and to develop new technologies and applications.

### Drug Discovery

- Assay development
- Compound management
- Primary screening
- Secondary screening
- ADME/ Tox

### Life Science

- Molecular biology
- Synthetic biology
- Plate coating
- Proteomics
- Genomics
- Biochemistry

Originally established by CyBio AG, the products extend the portfolio of Analytik Jena since 2009.

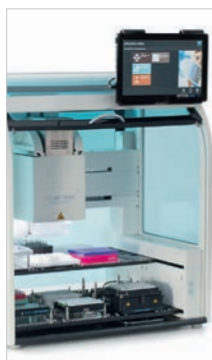
# Instruments & Components

Superior quality and reliability. Analytik Jena manufactures a range of precision liquid handling and plate storage instruments with a comprehensive set of functional modules that form the base of fully automated integrations covering all discovery applications.

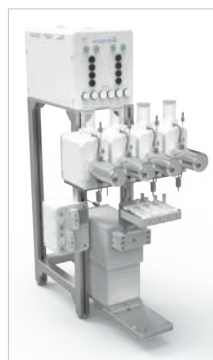
## Lab Automation products



96/ 384/1536 Channel Pipettors



1/ 8/12/16/24/96/384 Channel Pipettors



Dispensers



Microplate Storage & Barcode Labeling



Real-Time Thermocycler

## Functional modules

- Dynamic lid handling
- Tip wash stations and reservoir fill stations
- Barcode readers
- Transport modules
- Reagent cooling and heating systems
- Process safety technology



Lid Handling



Tip Wash Station

## Third party integrations

Analytik Jena Automation supports the integration of a variety of third party components such as incubators, washers, centrifuges, shakers, readers.



# Professional Project Management

## Tailor-made solutions on schedule

Your demands are many-sided and complex. Our automation experts are trained to develop innovative and competitive solutions meeting your requirements. A specifically assigned project manager will help you throughout the whole project, from the first consulting to the running system until final installation and testing. Professional planning, including clearly defined responsibilities and milestones, is the basis for our tailor-made solutions being delivered on schedule.

01

### Consulting

To make sure your Analytik Jena Automation solution covers your expectations, we will qualify in a planning meeting your requirements concerning:

02

### Proposal

Based on the defined specifications, a team of engineers and application specialists will prepare a proposal that provides you with a:

03

### Final Design & Assembly

Based on the proposal, final sign-off drawings will be generated. Once approval is given, the in-house assembly and programming will begin. The commissioning also includes intensive tests according to defined test and acceptance procedures. This phase comprises:

04

### Installation

Installing the system in the customer's lab will be completed in a few days. As part of the final phase, the users will be directly trained and enabled to immediately handle the system with confidence. Your system will be delivered to your facility including:

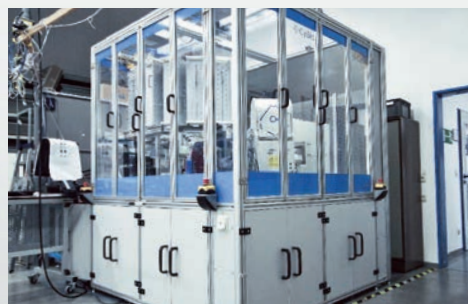
- Application
- Throughput
- Hardware requirements
- Data handling and IT integration
- On-site conditions



- System layout
- Detailed specification
- Project plan
- Process simulation
- Development and installation schedule



- Coordination of necessary activities
- Milestone control and supervision
- Change management and cost control
- Factory Acceptance Test (FAT) as negotiated



- Assembly
- Set up and fine tuning
- Tests
- Side Acceptance Test (SAT) as negotiated
- Training



# Software

Software is the key element for automation systems. Our powerful and scalable software packages allow for detailed control of a broad range of hardware modules as well as easy handling of complex scheduling tasks.

## CyBio® Scheduler

CyBio® Scheduler provides you with the right flexibility and precision to run your automation system. No matter how complex your assays are, with CyBio® Scheduler you will achieve reproducible and uniform conditions and assay results for each individual plate:

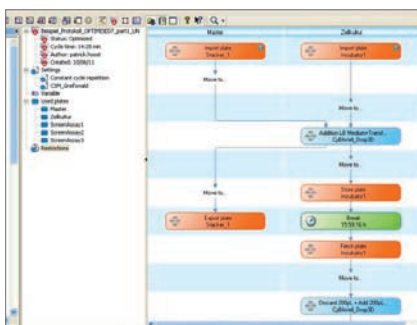
- Easy drag & drop workflow creation
- Powerful and fast assay optimization
- Precise fast assay simulation
- Automatic synchronization and optimization

- Scheduled processing including online visualization
- Cycle and assay interleaving
- Multi-faceted interfaces with your LIMS, network and database
- Versatile error recovery and message services
- Tracking of all relevant sub-processes
- Identification and status of all microplates in the process
- Easy data import and export

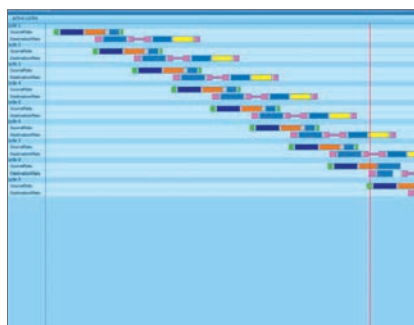
## CyBio® Composer

CyBio® Composer allows for the advanced control of numerous devices

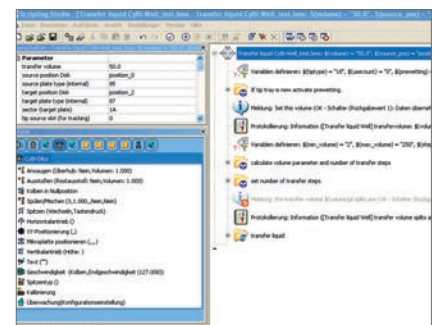
from Analytik Jena as well as from other vendors facilitating detailed instrument control on a script level. It also incorporates versatile batch processing features, which makes it the ideal choice for small scale workstations.



CyBio® Scheduler: Workflow definition



CyBio® Scheduler: Online visualization



CyBio® Composer: Script editing





## Application Expertise

We are proud to be able to provide the most reliable and precise instruments, yet we understand that perfect customer satisfaction is only possible by bringing hardware, software and application know-how together. Our application specialists are always prepared to discuss your individual application needs.

Our scientific expert team covers a broad range of activities such as:

- Hands-on training and demonstrations
- Customer specific performance tests and evaluations
- Applications consulting
- Assistance during assembly and testing of automation systems

In addition to the direct and specific support, our application team has conducted a variety of tests and published their findings and recommendations amongst others in a range of freely available technical notes.

Please see our website at [www.analytik-jena.com](http://www.analytik-jena.com) for more details.

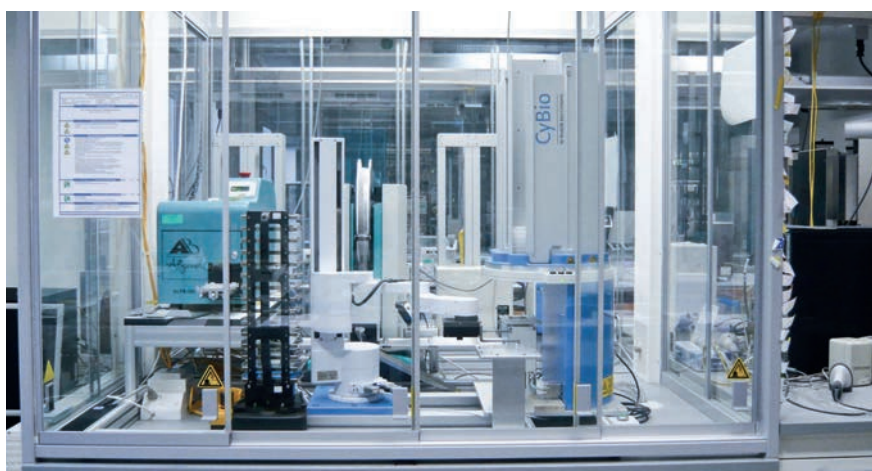
## Examples & References



The Automated Plate Replicator is capable of producing large numbers of storage and screening plates and ensures sample integrity during transferring aliquots of compound from a library stock. It combines our liquid handling with REMP tube technology and handles the plate transport by two 6-axis robot systems.



The CyBio®-Screen-machine is designed to allow flexible and reliable automation of antibody-based immunoassays. Based on a 6-axis robot system to handle the plate transport, the range of integrated instruments automates the processes completely.



The Dilution System automates assay-ready plate preparation, reformatting and serial dilutions based on the TTP Labtech Mosquito® technology. A sophisticated data base management combined with a 4-axis laboratory robot, storage and a sealer, allows for high flexibility and increased walk-away time.



# Analytik Jena Services

Your reliable and competent partner



We set the standard in Product Innovation.

We care about your success.

Our highly skilled service staff is committed to excellence.

Our philosophy is simple.

## Your benefits

- Our service staff delivers preventive maintenance and calibration visits according to our strict performance requirements
- Operator training including application support on-site or at our facilities
- Software upgrades with installation and training
- Unlimited phone support
- Worldwide service network
- Factory trained field service engineers
- 24-48 hour on-site service response

## Just call our service team

### Service contact Germany, Austria, Switzerland:

- +49 3641 77 9449
- [service.cybio@analytik-jena.de](mailto:service.cybio@analytik-jena.de)

### Service contact in the USA:

- +1 781 376 9899
- [service.usa@analytik-jena.com](mailto:service.usa@analytik-jena.com)

### Service contact in the UK:

- +44 162 266 2118
- [cybio.ne@analytik-jena.com](mailto:cybio.ne@analytik-jena.com)

### Worldwide partners

Analytik Jena's contact partners are available for you worldwide on-site.

#### Headquarters

Analytik Jena AG  
Konrad-Zuse-Str. 1  
07745 Jena · Deutschland

Tel +49 3641 77 9400  
Fax +49 3641 77 767776  
[lifescience@analytik-jena.com](mailto:lifescience@analytik-jena.com)  
[www.analytik-jena.com](http://www.analytik-jena.com)

Pictures: Analytik Jena AG  
Subjects to changes in design and scope of delivery as well as further technical development!